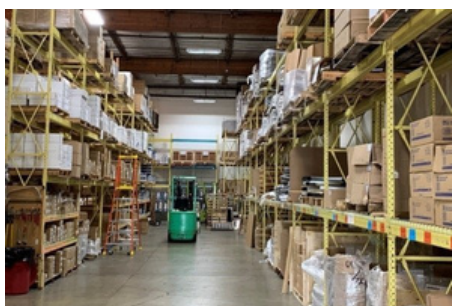




	<p><b>ATG E-Power</b> Intelligent, flexible charging solutions to meet residential, commercial and multi-family needs. Providing a convenient and sustainable way to power electric vehicles.</p>		<p><a href="mailto:Sarah@repeasa.com">Sarah@repeasa.com</a> 253-478-3389</p>	<p>WA,OR, Northern ID, AK</p>	<p><a href="http://www.epower.atgelectronics.com">www.epower.atgelectronics.com</a></p>
	<p><b>EPCO (Engineered Products Co.)</b> Ground Bonding, Splice Kits, Heat Shrink Tubing, Power Cords, Range &amp; Dryer Cords</p>		<p><a href="mailto:Phil@repeasa.com">Phil@repeasa.com</a> 253-478-3388 <b>Stocked at ESA</b></p>	<p>WA,OR, Northern ID, AK</p>	<p><a href="http://www.engproducts.com">www.engproducts.com</a></p>
	<p><b>Hayata</b> A USA owned and based company. Your top source for stainless steel cable ties, banding &amp; tags</p>		<p><a href="mailto:Phil@repeasa.com">Phil@repeasa.com</a> 253-478-3388</p>	<p>WA,OR, Northern ID, AK</p>	<p><a href="http://www.hayata.com">www.hayata.com</a></p>
	<p><b>Light Pole Systems Inc.</b> Experts with 35 years if experience. Copper wire theft prevention and light pole repair techniques.</p>		<p><a href="mailto:Sarah@repeasa.com">Sarah@repeasa.com</a> 253-478-3389</p>	<p>WA,OR, Northern ID, AK</p>	<p><a href="http://www.lightpolesystems.com">www.lightpolesystems.com</a></p>
	<p><b>Marley Engineered Products **</b> Berko &amp; QMark Residential, Commercial, &amp; Industrial Heat <b>** Mechanical Channel only</b></p>		<p><a href="mailto:Kim@repeasa.com">Kim@repeasa.com</a> 253-478-3387</p>	<p>WA,OR, Northern ID, AK</p>	<p><a href="http://www.marleymep.com">www.marleymep.com</a></p>
	<p><b>Morris Products</b> With the support of DiversiTech, Morris does the job of dozens of vendors in the Electrical, HVAC, industrial &amp; Commercial industries.</p>		<p><a href="mailto:Phil@repeasa.com">Phil@repeasa.com</a> 253-478-3388 <b>Stocked at ESA</b></p>	<p>WA,OR, Northern ID, AK</p>	<p><a href="http://www.morrisproducts.com">www.morrisproducts.com</a></p>
	<p><b>MYSA</b> Smart thermostats for electric heat and cooling systems.</p>		<p><a href="mailto:Sarah@repeasa.com">Sarah@repeasa.com</a> 253-478-3389</p>	<p>WA,OR, Northern ID, AK</p>	<p><a href="http://www.getmysa.com">www.getmysa.com</a></p>
	<p><b>Mulberry Metal Products</b> Made in the USA, weatherproof, receptacles, switch plates</p>		<p><a href="mailto:Phil@repeasa.com">Phil@repeasa.com</a> 253-478-3388 <b>Stocked at ESA</b></p>	<p>WA,OR, Northern ID, AK</p>	<p><a href="http://www.mulberrymetals.com">www.mulberrymetals.com</a></p>
	<p><b>Panasonic Ventilation Fans*</b> The ventilation solution to the new building codes <b>*Electrical distributor and lighting showrooms only</b></p>		<p><a href="mailto:Kim@repeasa.com">Kim@repeasa.com</a> 253-478-3387</p>	<p>Western WA, Western OR, ONLY</p>	<p><a href="http://www.panasonic.com/ventfans">www.panasonic.com/ventfans</a></p>
	<p><b>Reliance Controls</b> Transfer switches and panels for portable generators, steel and non-metallic power inlet boxes, in wall timers &amp; much more</p>		<p><a href="mailto:Phil@repeasa.com">Phil@repeasa.com</a> 253-478-3388 <b>Stocked at ESA</b></p>	<p>WA,OR, Northern ID, AK</p>	<p><a href="http://www.reliancecontrols.com">www.reliancecontrols.com</a></p>
	<p><b>Setra</b> One of the easiest to use and most advanced Power Meters on the planet, designed to save time and money. Available in 3, 12, &amp; 48 load options</p>		<p><a href="mailto:Phil@repeasa.com">Phil@repeasa.com</a> 253-478-3388</p>	<p>WA,OR, Northern ID, AK</p>	<p><a href="http://www.setra.com/product/power-meters">www.setra.com/product/power-meters</a></p>
	<p><b>Shurtape</b> A complete line of multiple colored electrical, duct tapes, with a large selection of specialty tapes. Made in America categories.</p>		<p><a href="mailto:Sarah@repeasa.com">Sarah@repeasa.com</a> 253-478-3389</p>	<p>WA,OR, Northern ID, AK</p>	<p><a href="http://www.shurtape.com">www.shurtape.com</a></p>
	<p><b>Stelpro</b> A complete line of multiple colored electrical, duct tapes, with a large selection of specialty tapes. Made in America categories.</p>		<p><a href="mailto:Kim@repeasa.com">Kim@repeasa.com</a> 253-478-3387 <b>Stocked at ESA</b></p>	<p>WA,OR, Northern ID, AK</p>	<p><a href="http://www.stelpro.com/en/">www.stelpro.com/en/</a></p>
	<p><b>Warmup</b> World's best-selling floor heating brand with industry leading 30-year warranty. Snow melt and pipe trace.</p>		<p><a href="mailto:Lindsey@repeasa.com">Lindsey@repeasa.com</a> 253-478-3397 <b>Stocked at ESA</b></p>	<p>WA,OR, Northern ID, AK</p>	<p><a href="http://www.warmup.com">www.warmup.com</a></p>
	<p><b>World Dryer</b> Heated and non-heated high speed, hygiene, energy saving, quality hand dryers and more.</p>		<p><a href="mailto:Sarah@repeasa.com">Sarah@repeasa.com</a> 253-478-3389</p>	<p>WA,OR, Northern ID, AK</p>	<p><a href="http://www.worlddryer.com">www.worlddryer.com</a></p>



	<p><b>Aleddra</b> LED Lighting— T8/T5 lamps, Wall Packs, Floods, Vapor-proof, Battery backup T8 lamps</p>	<p><a href="mailto:Lindsey@repea.com">Lindsey@repea.com</a> 253-478-3397 <b>Stocked Locally</b></p>	<p>WA,OR, Northern ID, AK</p>	<p><a href="http://www.aleddra.com">www.aleddra.com</a></p>
	<p><b>American Lighting***</b> Leader in under cabinet lighting. Specializing in tape and rope lighting. ***Electrical distributor &amp; Commercial Lighting Departments Only</p>	<p><a href="mailto:Phil@repea.com">Phil@repea.com</a> 253-478-3388</p>	<p>WA,OR, Northern ID, AK</p>	<p><a href="http://www.americanlighting.com">www.americanlighting.com</a></p>
	<p><b>Elco</b> LED track and pendant lighting, plus much more.</p>	<p><a href="mailto:Sarah@repea.com">Sarah@repea.com</a> 253-478-3389</p>	<p>WA,OR, Northern ID, AK</p>	<p><a href="http://www.elcolighting.com">www.elcolighting.com</a></p>
	<p><b>EncapSulite</b> Made in the USA fixture line. Wash down rated to 1200 PSI. Shatterproof line of lamps.</p>	<p><a href="mailto:Sarah@repea.com">Sarah@repea.com</a> 253-478-3389</p>	<p>WA,OR, Northern ID, AK</p>	<p><a href="http://www.encapsulite.com">www.encapsulite.com</a></p>
	<p><b>EPCO (Engineered Products Co.)</b> Enclosed gasket 4'/8' fixtures, LED T8/T5, Temp Lighting, LED Utility, Tube Guards, Fixture Whips, LED Conversion Kits</p>	<p><a href="mailto:Phil@repea.com">Phil@repea.com</a> 253-478-3388 <b>Stocked at ESA</b></p>	<p>WA,OR, Northern ID, AK</p>	<p><a href="http://www.engproducts.com">www.engproducts.com</a></p>
	<p><b>Far UV Technologies</b> Using Krypton 222nm devices, dramatically reduce or eliminate pathogens commonly associated with the spread of cold/flu, MRSA, SARS-CoV-2 &amp; other microbes</p>	<p><a href="mailto:Sarah@repea.com">Sarah@repea.com</a> 253-478-3389</p>	<p>WA,OR, Northern ID, AK</p>	<p><a href="http://www.faruv.com">www.faruv.com</a></p>
	<p><b>Fulham</b> High Bay LED Retrofit Kit, AC/DC Field Install Retrofit Kits, Hot Spot LED, Workhorse LED, Racehorse, Firehorse</p>	<p><a href="mailto:Phil@repea.com">Phil@repea.com</a> 253-478-3388</p>	<p>WA,OR, Northern ID, AK</p>	<p><a href="http://www.fulham.com">www.fulham.com</a></p>
	<p><b>Gama Sonic Solar</b> Energy-efficient outdoor solar lighting products. Including garden, yard, path, landscape &amp; security lights. As well as lamp posts.</p>	<p><a href="mailto:Sarah@repea.com">Sarah@repea.com</a> 253-478-3389</p>	<p>WA,OR, Northern ID, AK</p>	<p><a href="http://www.gamasonic.com">www.gamasonic.com</a></p>
	<p><b>Light Pole Systems Inc.</b> Experts with 35 years of experience. Copper wire theft prevention and light pole repair techniques.</p>	<p><a href="mailto:Sarah@repea.com">Sarah@repea.com</a> 253-478-3389</p>	<p>WA,OR, Northern ID, AK</p>	<p><a href="http://www.lightpolesystems.com">www.lightpolesystems.com</a></p>
	<p><b>Phoenix Lighting</b> High performance LED Luminaires for Hazardous Locations</p>	<p><a href="mailto:Kim@repea.com">Kim@repea.com</a> 253-478-3387</p>	<p>WA,OR, Northern ID, AK</p>	<p><a href="http://www.phoenixlighting.com">www.phoenixlighting.com</a></p>
	<p><b>TCP (Technical Consumer Products)</b> Decades of lighting design experience and the most diverse line up of innovative LED lamps and luminaires.</p>	<p><a href="mailto:Lindsey@repea.com">Lindsey@repea.com</a> 253-478-3397</p>	<p>WA,OR, Northern ID, AK</p>	<p><a href="http://www.tcpi.com">www.tcpi.com</a></p>
	<p><b>Terralux</b> LED downlight and fixture retrofit kits</p>	<p><a href="mailto:Sarah@repea.com">Sarah@repea.com</a> 253-478-3389</p>	<p>WA,OR, Northern ID, AK</p>	<p><a href="http://www.terralux.com">www.terralux.com</a></p>



ESA is a full service agency, representing both lighting and electrical manufacturers. We maintain a 12,000 square foot warehouse (pictured to the left) with consigned stock providing faster shipping time to our customers. Our team is committed to providing unparalleled customer service and product knowledge. We are happy to visit your location with our display trailer (pictured to the right) for trainings, events, or distributor shows.

